

Delta bus commuters: you're getting out of the traffic and on to the fast-moving 17 Hwy bus lane

Beginning February 15, BC Transit riders travelling from Delta to Richmond or Vancouver can expect to make the trip at least 10 minutes faster thanks to a new bus lane. The lane runs northbound along Highway 17 for 1.7 kilometres, between Highway 10 and the Ladner/Tsawwassen interchange at Highway 99. It will enable buses to bypass vehicles queueing along Highway 17 and gain quicker access to Highway 99 with the help of a bus-activated signal. Many riders will be affected. Just during the morning rush an estimated 870 passengers on the #315, 404, 601, 602, 603, 604 and 608 routes will enjoy faster, more reliable and less stressful travel; and it's environmentally friendly.

SkyTrain offers fast, frequent service between rush hours too

On weekdays choose to travel between 9:30 am and 3:00 pm and between 6:30 pm and the last train, and you'll travel in comfort from one end of the system to the other and pay only a one-zone fare. Throughout the weekend and on holidays the deal is even better; you pay only a one-zone fare at any time throughout the day. It's a service that's made for serious shopping trips or leisure time activities.

Banner Design Competition to celebrate the arrival of SkyTrain at Surrey City Centre

A banner design competition, sponsored by the City of Surrey, is open to all Lower Mainland artists, community arts organizations, students and residents.

A jury will select up to two winning designs from the entries and 70 copies will be produced and displayed on City Parkway (135 Street) to mark the official opening of the three new SkyTrain stations.

Each of the winners will receive a \$400 prize. The closing date for entries is February 21 at noon, 1994. For more information, please contact Anita Deiter at 591-4281.

FOR INFORMATION ON HOW TO GET THERE BY TRANSIT

TIMETABLES are available free of charge at public libraries, city and municipal halls, community centres and the BC Transit Lost Property Office at Stadium Station. **TRANSIT GUIDES** offer a map, a listing of all routes, and fare information. They're available at 7-Eleven, SkyTrain station convenience shops and most FareDealers for a small charge. **THE YELLOW PAGES** show a route map, a list of bus routes and fare information. **INFORMATION BY TELEPHONE:** 261-5100. West Vancouver 985-7777

COMING EVENTS

10 Mary Cassatt (1844-1926) colour prints highlight an exhibition of 21 works on paper from the collection of the National Gallery of Canada, Feb 16-Apr 14 at the Vancouver Art Gallery. Also at the Gallery is an impressive exhibit of large-scale oil paintings by Vancouver artist Lucy Hogg. • Langley Seniors Recreation Centre is organizing a bus trip to the Boeing Aircraft Plant, Feb 17. \$35 includes lunch and tour. Info: 530-3020 • Surrey Art Gallery will present a Valentine Concert of jazz standards by The Kate Hammett-Vaughan Trio, Feb 13 at 2 pm. Adm by donation • Advantage Fine Arts Preschool and Hillview Parent Participation Preschool invite you to their annual Open House, Feb 19, 9:30 am-noon, at Riverway West Elementary School, 4340 Carson St, South Burnaby. • Vancouver Home Based Business Assoc meeting, Feb 15. 7 pm, Ramada Centre, 898 W.Broadway. Info: 224-7243 • Registrations are now being accepted for The Vancouver New Play Festival 3rd Annual 24-Hour Playwriting Competition, Mar 18/19. Fee \$20. Registration forms at NPC office: 1405 Anderson St, Vancouver. • See the work of 10 local artists at the Delta Community Arts Council in, 4869 Delta St, Ladner. • Russian Romances: Alexander Savchenko, bass and Laura Dziubaniuk, soprano perform at the Russian Community Centre, 2114 West 4th, Feb 13 at 3 pm. Tx \$9/\$7 • Woman to Woman: your Health and Happiness. Hear about new research results and discuss some of the most topical women's concerns, SFU at Harbour Centre, Feb 26, 8:30-5:00. Fee: \$35 (includes lunch & materials). Info: 291-5000 • The Back Alley Theatre, 751 Thurlow (at Robson) presents Steven Berkoff's *Lunch*, 12:10-12:55pm, Tues-Fri 'til Feb 25. Tx \$7.50/\$6 • The Vancouver Public Library's "City Poet's" series presents Ted Stone reading from *Riding the Northern Range: Poems from the Last Best West*, Feb 21, 7:30 pm, Central Branch • Delta Concert Band and Amabilis Singers joint concert, Feb 26 at Willingdon Church, 4812 Willingdon Ave, Bby. Adm \$8/\$5 • Annual Shari Meakin \$500 Bursary for struggling freelance writers. Application deadline: Feb 28. Info: 298-7322 • Germination Theatre Company presents Thomas Hunt's new play, *Ducks*, Wed-Sun 'til Mar 5 at Studio J, 152 West Hastings. Tx \$8. 669-9124. \$10 at door. • The North Shore Chorus with Sal Ferreras and Jernifer Riach in *A Tip to the Sun*, Feb 12, 8 pm, Centennial Theatre, N.V. Tx: 980-4960/984-4484 • Children's entertainer Charlotte Diamond appears at Surrey Arts Centre Theatre, Feb 27, 1:30 & 3:30. Tx: 596-1515 • Greater Vancouver Operatic Society presents *The Music Man*, Feb 24-26 & Mar 2-5 at 8 pm. Matinee Feb 27 at 2 pm. North Vancouver Centennial Theatre. Tx 984-4484 • Women in Music presents *The Voice as Instrument: Slavic Folk, South Indian Devotional, Jazz*. Feb 20, 12:30-6:00, VCC, King Edward Campus, 1155 E.Broadway. Tx\$30/\$20. Sathia Aruliah at 421-3736 • The People's Law School offers free classes on a variety of subjects from small business to property rights in a relationship. Info: 688-2565 • Vancouver International Boat Show, BC Place Stadium 'til Feb 13 • The YMCAs of Langley and Surrey are recruiting T-ball coaches for their spring leagues. If you enjoy children and have knowledge of baseball please call Heidi or Dale at 581-0014 • The Armadillo Piano Quintet in concert at the Glass Slipper, 2714 Prince Edward, Feb 15 at 8 pm. Tx \$10/\$5. Info: 255-5198 • The Myra Melford Jazz Trio with Francois Houle, Vancouver East Cultural Centre, Feb 20 at 8 pm. Feb 24 - Thrift Shop Sale, South Burnaby United, Rumble & Gray, 10:00-2:00. Housewares, clothing, etc Feb 25/26 - Rummage Sale, St.Peter's, in Dantenwill Hall, 336 Agnes, New

Westminster from 9:30 am. Feb 26 - Auction Sale, St. Augustine's Hudson & 71st, 11:30-3:30. Viewing from 10:30

Printed on Recycled Paper Vol 79 No 3 ISSN0714-1688



Acc # 2004-114 '12

BUZZER

PUBLISHED BY BC TRANSIT, FRIDAY, FEBRUARY 11, 1994

Hot drinks and transit don't mix P.3

Good for you. Good for the environment.



Bike & Ride

BC Transit offers opportunities for cyclists to pedal their way to fitness while combining their trips with environmentally friendly transit. (See page 2)

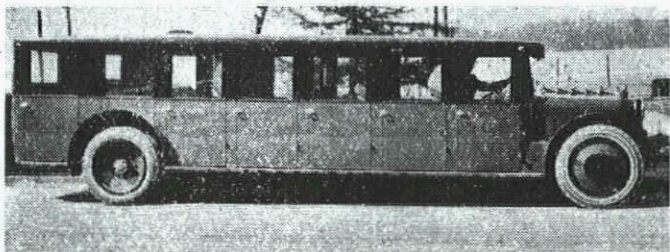
Bicycle Locker Program

While all 20 lockers at Scott Road Station are leased, some lockers are available at Sexsmith Park & Ride in Richmond and at Ladner Exchange. 20 lockers are planned for the new King George Station in Surrey, scheduled to open in the spring. Lease reservations are now being accepted. Lockers can be leased on fixed three-month terms: January to March, April to June, July to September and October to December. The fee per lease term is \$30, plus a \$20 key deposit. The deposit will be refunded when the key is returned, or forfeited if the key is lost. Cycling British Columbia administers the program for BC Transit. For further information, please phone them at 737-3034.

Bicycles on SeaBus

Tens of thousands of cyclists now take advantage of the opportunity to board SeaBus each year. Their bicycles are carried free of charge at any time of day, including rush hours.

Vancouver-New Westminster, 1924 style



The May 2, 1924 issue of The Buzzer announced that a corps of 11 drivers had been picked from 300 applicants and "the last word in de luxe motor coaches," made right here in Vancouver, had begun operating between Vancouver and New Westminster, via Kingsway.

February is Heart Month
Help save the lives of
those you love

Help us beat Canada's #1 Killer



Hot drinks and transit don't mix

Operators, particularly those driving in downtown Vancouver, are concerned at the number of passengers who are boarding with containers of hot drinks. This practice could lead to messy and even dangerous accidents to other passengers.

We would appreciate your cooperation in honouring our regulations against eating and drinking on board transit vehicles. Your fellow passengers will appreciate it too.

Please check where your bus stops before you board

Suburban commuter services have limited-stopping procedures

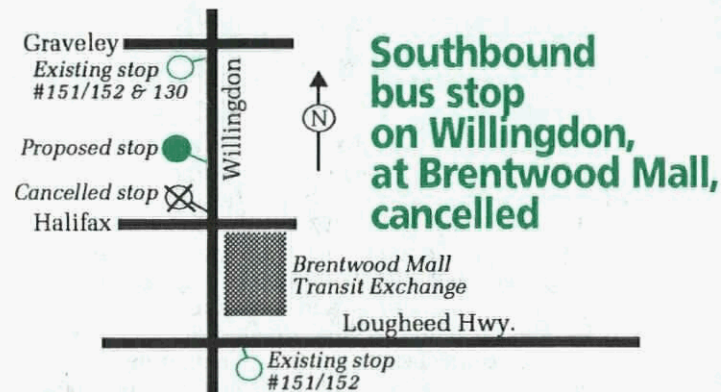
Before boarding an unfamiliar limited-stop commuter bus please check the timetable or phone transit information for detailed stopping information.

Suburban/commuter services (with route number 101 or higher) provide local service within their suburban service areas and limited-stop service to and from downtown Vancouver. As the name implies, they're designed to get passengers to and from the city as quickly as possible.

Limited-stop service also applies on some specialized Vancouver routes: #2 Park & Ride, #10 Hastings Express, #22 Macdonald Express, #31 UBC/Broadway Station, #32 Downtown/Dunbar Loop and #85 UBC.

Please understand that your operator cannot make unscheduled stops. Timetables which carry detailed stopping information are available at public libraries, city and municipal halls, community centres, Travel InfoCentres, chambers of commerce, and the Transit Lost Property Office at Stadium Station. The Transit Information number is 261-5100. Operators are on duty from 6:30 am to 11:30 am daily.

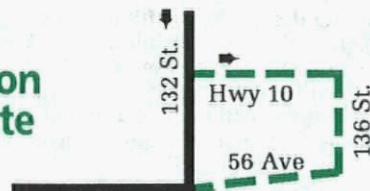
The Kidsport Fund, created by Sports B.C. to make sport more accessible to children all over British Columbia, will be holding its SportsDay '94 on March 11. Purchase a \$5 KidSport yellow ribbon from participating corporate and volunteer groups. Every dollar raised goes to the kids.



The southbound bus stop on Willingdon, just north of Halifax Street, has been cancelled to address the safety concerns associated with the merging of buses into traffic turning left on to eastbound Lougheed Highway. Traffic in the left turn lane often extends well past the intersection at Halifax. Buses leaving the stop just north of Halifax are blocked by these left turning vehicles and have had great difficulties in making the turn.

B.C. Transit is working with the City of Burnaby to relocate the former stop further north. In the meantime, #151/152 buses will serve passengers at the stop on Willingdon, just south of Graveley. Passengers may also board the #151/152 services on the south side of Lougheed Highway, east of Willingdon. We'll keep you posted on developments. BC Transit regrets any inconvenience to passengers who transfer to other buses at Brentwood Mall Transit exchange.

Panorama Ridge portion of #322 route restored



Now that turning problems at the intersection of Hwy 10 and 136 St. have been resolved, 322 Scottsdale Mall buses providing limited service via Panorama Ridge are again turning east on Highway 10, south on 136 Street and west on 56 Ave (Old McClellan) to rejoin the regular route. 322 Newton Exchange buses continue to turn north from 56 Ave to 132 Street.

Psychiatrist: "Do you have trouble making up your mind?"

Patient: "Well, yes and no."