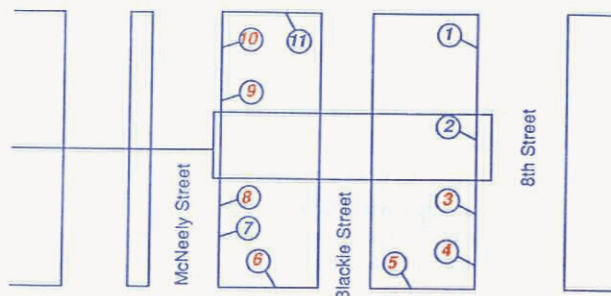


## New Route-Bay Assignments at New Westminster Station

With the extension of SkyTrain on March 19, Surrey/North Delta bus routes presently operating to New Westminster Station will terminate at Scott Road Station. This change provides an opportunity to improve passenger access to services at New Westminster Station. The revised route-bay assignments are as follows:

Bay No.		Bay No.	
3	100 Port Coquitlam Centre	5	100 Airport
	169 Park-Ride	6	147 Coquitlam Centre
When SkyTrain not operating			148 Ioco
	319 Scottsdale Mall		156 Coquitlam Rec Centre
	320 Langley Centre	8	106 Metrotown Station
	321 White Rock Centre	9	102 Cumberland
			108 Eighth Street
4	112 Edmonds Station	10	120 Vancouver



## UBC's 75th Anniversary Open House

MARCH 9, 10 & 11 FROM 10 A.M. TO 5 P.M.

While the adults explore the many displays which highlight UBC's contributions to teaching and research, younger visitors can play at Kid's World, which features interactive games, storytelling, science displays, entertainers, face painting and much more.

To get to UBC by bus on Friday catch a #4, #9, #10 or #41, or a #25, #31 or #49 during rush hours. On Saturday or Sunday catch a #4, #10 or #41.

## TIMETABLE UPDATES

The following revised 'Stopping procedures' for the 501 was omitted from the March 19 timetable.

### Stopping Procedures- 501

The 501 operates between Scott Road Station and South Langley.

#### To Scott Road Station

Stops for both pickup and discharge of passengers are made at all local stops (Flag stops on 200th St. between Willoughby Way and 86th Ave.) up to and including the Walnut Grove Park & Ride. Beyond this point stops are made for **discharge only** at 104th Ave. at 152nd St. (Guildford), King George Hwy. at 108th Ave. (Whalley) and at Scott Road Station.

#### To Langley South

From Scott Road Station, stops for **pickup only** are made at 108th Ave. at King George Hwy. (Whalley) and 104th Ave. at 150th St. (Guildford). Beginning at the Walnut Grove Park & Ride, stops are made for both pickup and discharge at all local stops (Flag stops on 200th St. between 86th Ave. and Willoughby Way) to Langley South.

In addition, for the correct bus/bay numbers at Langley Centre, please refer to the map on page 12 of the Langley timetable.

Please note that the timing point in Cloverdale for the 320 Langley Centre/Scott Road Station is 176th St. at 57th Ave. in both directions. The 320 appears in the Langley timetable and the Surrey/North Delta/White Rock timetable.

### ODDS & ENDS

SFU Harbour Centre presents a course on News and Feature Writing. Saturday mornings beginning March 10. Fee \$225. Info: 291-5073 < The directory of Delta artists (visual artists, craftspeople, writers, designers and performers) is now on sale at the Delta Community Arts Council, 4869 Delta St. Info: 946-0525 < Cue to Cue Players Society of Cloverdale presents The Secret Affair of Mildred Wild, Thurs-Sun, Mar 15-31, 5732-176th St. Rsv: 574-1149 < Ticket sales begin Mar 10 at all Ticketmaster outlets for The Vancouver Children's Festival, May 18-21. 22 companies from 12 countries will be presented. A limited number of tickets are also available for individual Symposium sessions. Info: Norma Laidlaw at 687-7679 < Three Surrey photographers will introduce an exhibition of their work on March 11 at 2 p.m., Surrey Art Gallery < Join poet Alan Woodland, actress Ann Lidstone, and musician Lori Pappajohn for a moving interpretation of river poetry and music, Mar 13, 7:30 p.m., New Westminster Public Library -- Exhibition of oils and watercolours by James Mah 'til Mar 31 <

The Gordon Southam Observatory is open for telescopic observing Fri-Sun, noon-5 p.m. and 7-11 p.m., weather permitting. Phone to verify hours < Children's arts and drama camps, March 19-23 at Surrey Arts Centre. Info: 596-7461 < French movie for French Immersion students: Petit Pied, Le Dinosaur, Mar 24, 2 p.m., North Vancouver City Library < Children's author Joan Buchanan reads Mar 12 at Dunbar and Collingwood branches of the Vancouver Public Library < Metro Theatre Centre presents The Whole Truth, Wed-Sat, Mar 10-31. Rsv: 266- < An exhibition of the cool minimal paintings of Vancouver artist James McMorczan, 'til Apr 1, Burnaby Art Gallery < Artswest meets Mar 19 at 7 p.m., Bear Creek Park Pavilion. Non-members \$2 < The New Play Centre presents Springrities 90, a major festival of plays and playwriting, Mar 22-Apr 9 at the Waterfront Theatre. Info: 685-6228 < New Westminster Barbershop Chorus and the Lion's Gate Chapter of Sweet Adelines present Total Harmony, Mar 24, 8 p.m., John Oliver High School. Tx: \$10/\$6. 278-7193 < Sonic Lab, a student ensemble from U.Vic will perform Schoenberg's lunaire for voice and chamber ensemble at a special free noon hour performance, Mar 15, SFU Theatre. Info: 291-3513 < North West Opera presents two operas by Carlo Menotti: The Telephone and Amelia Goes to the Ball, Mar 20-24, 8 p.m., Vancouver East Cultural Centre. Tx at 980-1926 or Ticketmaster < Children's spring break programs at Surrey Museum and Archives: Dig Those Dinosaurs, Family Discovery Days, Painted Sticks and Jumping Jacks. Info: 574-5744 < GVRD Parks offers spring break programs in the forested setting of Camp Capilano, Mar 20-22. Choose from a variety of programs for ages 4 to 11. Info: 432-6351 < Tamahnous Theatre and the Firehall Arts Centre present the world premiere of Powder Blue Chevy, Mar 10-31. Rsv: 689-0926 < Mysterious photographs of old movie theatres and oceanscapes by Hiroshi Sugimoto, and 10 recent works by Newfoundland artist Marlene Creates are now being exhibited at Presentation House, 333 Chesterfield Ave, N.Van < Community Arts Council of Vancouver 8th Annual Juried Exhibition, Mar 15-30, 837 Davie St. < Rt. Rev. Michael A. Mann, Dean of Windsor, England, will speak at the Women's Canadian Club of Vancouver Sandwich Luncheon, March 12, Robson Square Media Centre. Guests \$5. Lunch from 11:45 a.m. < Author Wendy Wickwire will present anecdotes, slides and stories from her latest book, Write It On Your Heart: The Epic World Of An Okanagan Storyteller, Mar 12, 7:30 p.m., Lincoln Branch, Coquitlam Public Library. < Vancouver's Sea Theatre presents the 1989 Off-Broadway hit, The Boys Next Door, Station Street Arts Centre 'til Mar 31. Rsv: 688-3312 < Balloon twisting and face painting for children aged 5-11 at Marpole-Oakridge Community Centre, Mar 10, 1-2:30 p.m. \$5. Pre-register: 327-8371 < The South Hill Public Library at 6076 Fraser St., has been completely modernized and is now open < The Canadian Mental Health Assoc and the B.C. Medical Assoc. present a session on Eating Disorders, Mar 22, 7:30 p.m., Holiday Inn, 711 W. Broadway. \$10. \$15 per family.

### COMING EVENTS

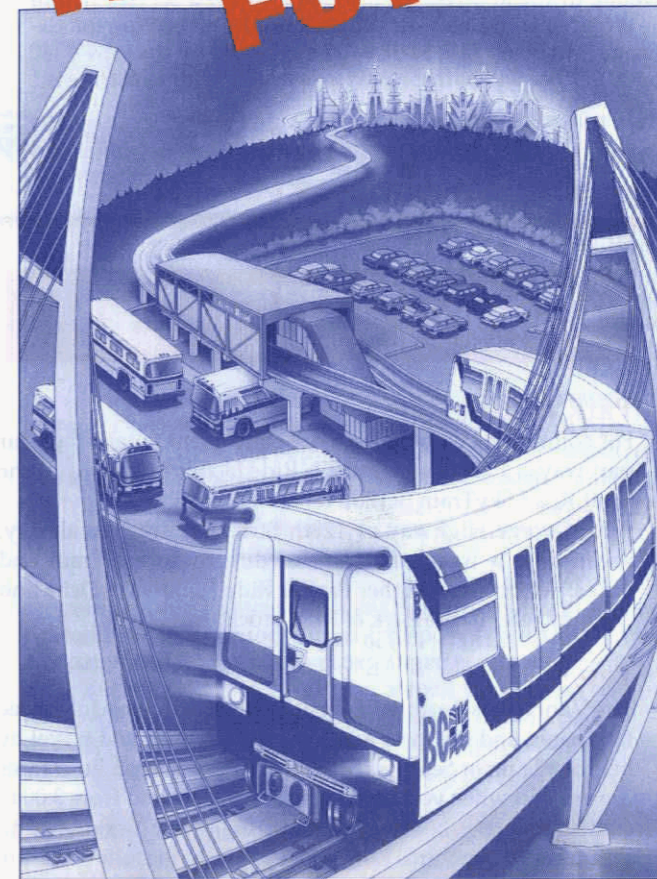
10 - Flea Market & Bake Sale, Hill United, 645 E. 47th. 10-2.  
Mar 10/11 - Garage Sale, The Learning Tree Daycare, 4103 Brant St. 10-2  
Mar 14 - Tea, by the L.A. to the Army, Navy, Airforce Veterans, 100 Lounge, 2211 Kingsway, 12:30-3 p.m.  
Mar 15 - Thrift Shop Sale, St. Stephen's Anglican, 9887 Cameron St., Bby. 1-3 & 7-9 p.m. Household articles, books, etc  
Mar 16 - Auction, St. Chad's, 23rd & Trafalgar, 7-10 p.m. Mar 17 - Rummage Sale from 10 a.m.  
Mar 17 - Thrift Sale, Dunbar Hts. United, 24th & Collingwood. 10 a.m. - noon.  
Mar 18 - Sale of members' plants, Vancouver Rhododendron Soc., Clay's Nursery, 3666-224th St., Langley. 1-4  
Mar 21-24 - Rummage Sale, Edmonds Baptist, 7135 Walker Ave at Arcola St., Burnaby. 10 a.m. - 5 p.m. daily.  
Mar 22 - Thrift Shop Sale, S. Burnaby United, Rumble & Gray. Housewares, clothing, books, etc.

Vol. 75 No. 5 ISSN 0714-1688

# The Buzzer

Published by BC Trsantsit March 9, 1990

## TRACK TO THE FUTURE



Transit Service Changes for Surrey, North Delta and Langley, effective March 19. See page 2

On March 19, SkyTrain crosses the Fraser River and arrives in Surrey at the newest station in the system! Revised bus services will provide you with direct connections to SkyTrain, new routes, increased frequency, improved local service, greater service reliability and an expanded Park & Ride lot.

For commuting or local travel - it's your choice! Bus or Park & Ride to Scott Road Station and transfer to SkyTrain for a rapid, 32-minute commute to the heart of Vancouver. For shopping, school or local business, travel with greater ease on an enhanced interconnecting network of buses.

### Direct SkyTrain Connections

With the new Scott Road link to SkyTrain, buses will no longer be required to cross the heavily congested Pattullo Bridge into New Westminster. Thirteen routes from Surrey, Langley and some areas of North Delta have been redesigned to travel directly to Scott Road Station. As a result, travel time between Surrey and downtown Vancouver will be reduced.

There are 16 other stations along the SkyTrain route, with stops at New Westminster, South Burnaby, East Vancouver and downtown. You can transfer to buses at each of these stations to continue your journey anywhere in the 1,500 square kilometre service area.

### Better Reliability

Without the Pattullo Bridge crossing, there will be less delay to and from New Westminster and better reliability for local bus connections.

### Improved Local Service

We've added two new routes and revised seven others to provide you with an improved network of local buses in and around the areas of Fleetwood, Newton, Panorama Ridge, Whalley, King George Highway, 152nd Street, Cloverdale, and Langley.

### Increased Frequency - Better Connections

Improvements have been made on 21 routes to give you more frequent service, later hours of operation and great connections at major transfer points.

Turn to the inside spread for further SkyTrain information and a complete listing of March 19 bus service changes.

## PUBLIC OPEN HOUSES

BC Transit is planning a number of new bus routes in the Coquitlam - Port Coquitlam, Surrey - Delta and Langley areas. It is proposed that service begin in September, 1990.

Complete information will be available on the proposed routes at a series of six public open houses (locations and dates of the first three open houses are listed below; the remaining three will be listed in the March 23 issue of the Buzzer). Planners will be in attendance to answer questions, discuss concerns and record any suggestions you might have.

Further information is also available by contacting the BC Transit Planning Department at 264-5000.

### Coquitlam - Port Coquitlam

#### PROPOSED JOHNSON HEIGHTS - CANYON SPRINGS ROUTE

The #167 Coquitlam Centre/Westwood Plateau is a local route designed to connect the Eagle Ridge, south Westwood Plateau, Canyon Springs and Johnson Heights residential areas of Coquitlam with the new Coquitlam Centre transit exchange (intersection of Lougheed and Barnet Highways). It is proposed that the new service would follow a loop route; northbound on Lansdowne Drive (complementing the existing #166 service) and southbound on Johnson Street.

Buses would operate Monday to Saturday from approximately 6:00 a.m. to 6:30 p.m. During weekday rush hours (6 a.m. to 9 a.m. and 3:30 p.m. to 6:30 p.m.) buses would run every 15 minutes. During the day base period, Monday to Saturday, they would run every 60 minutes.

The open house on the proposed #167 route will be held at:

Walton Elementary School      Wednesday, March 14  
2960 Walton Ave., Coquitlam.      3:30 p.m. to 8:00 p.m.

"When you sit with a nice girl for two hours, you think it's only a minute. When you sit on a hot stove for a minute, you think it's two hours. That's relativity."      Albert Einstein

## FOCUS ON TRANSIT

## PUBLIC OPEN HOUSES

### PROPOSED CITADEL HEIGHTS - MAYFAIR INDUSTRIAL PARK - NEW WESTMINSTER STATION

The proposed extension of the #169 service would provide two-way service between Port Coquitlam Centre and New Westminster Station, via the Mary Hill by-pass, Mayfair Industrial Park, Lougheed Highway and Columbia Street.

Buses would operate every 30 minutes in both directions during the morning and afternoon rush hours, Monday to Friday, (approximately 6:00 to 8:30 a.m. and 3:00 to 6:30 p.m.) mainly to accommodate passengers going to and from work or school.

The open house on the proposed #169 extension will be at:

Terry Fox Library      Thursday, March 22  
2470 Mary Hill Road      3:00 p.m. to 8:00 p.m.  
Port Coquitlam

### Delta

#### PROPOSED SERVICE CHANGES

##### 310 Scottsdale Mall/Vancouver

Morning rush hour service to Vancouver and afternoon rush hour service from Vancouver would be discontinued and replaced by an improved #311 service.

The new #315 route would provide service along the River Road portion of the route. The #310 would continue to provide morning rush hour service from Vancouver and afternoon rush hour service to Vancouver.

##### 311 Scottsdale Mall/Vancouver

During rush hours, service frequency would be improved from every 30 minutes to every 15 minutes.

##### 315 Scott Road Station/Ladner Exchange

The #315 would be a new rush hour route between Scott Road Station and Ladner Exchange, via River Road. Buses would operate in both directions to the Tilbury/River Road industrial area as well as providing a direct link to SkyTrain. Service would be hourly during rush hours.

##### 317 Guildford/Scottsdale Mall

The #335 Guildford/Scottsdale Mall route would be redesignated the #317 to more closely align the route number with other North Delta services. The route and service levels would be unchanged.

##### 602 Tsawwassen Heights/Vancouver

At times during rush hours, service frequency would be improved from every 20 minutes to every 15 minutes.

##### 606/608 Ladner Ring

The #606/608 route would be extended into a new neighbourhood currently beyond convenient walking distance. Buses would operate via 57 Street, 52 Avenue, Crescent Drive, Westminster Avenue, Linden Drive, Central Avenue to Ladner Trunk Road and the regular route beyond. Service levels would be unchanged.

##### 615 Ladner Ring

The #615 would be a new rush hour loop route to the Sunrise housing development in East Ladner. Buses would operate along Holly Park Drive to the south of Ladner Trunk Road and to Brodie Road in the north. Service frequency would be every 30 minutes.

The open house for the proposed Delta service changes will be held at:

Delta Manor Elementary School      Tuesday, March 27  
4750-57th Street      3:30 p.m. to 8:00 p.m.  
Delta

#### WESTERN RAILS 8TH ANNUAL RAILROADIANA SHOW

Sunday March 18 from 9:00 a.m. to 4:00 p.m.

Cameron Rec Centre, 9523 Cameron Street, Burnaby

# March 19 - Transit service moves into the future for Surrey, North Delta & Langley

## #312 Scott Road Station/Scottsdale Mall

All-day service will be provided between Scottsdale Mall and Scott Road Station. Service formerly provided on the route sections between Scottsdale Mall and 22nd Street Station, Scott & 96th Avenue and Whalley Exchange will be discontinued and replaced by the #340 and #329 routes. Service will be improved to every 15 minutes during rush hours and to every 30 minutes on Sundays and holidays.

## #314 Panorama Ridge/Scottsdale Mall/22nd Street Station

The route will be extended to 132nd Street & 72nd Avenue and will operate through Panorama Ridge via 56th Avenue, Highway #10 to Scottsdale Mall and then via the regular route to 22nd Street Station.

## #316 Whalley Exchange/Scottsdale Mall

Departure times will be adjusted to improve connections at Scottsdale Mall, Scott & 96th Avenue, and Whalley Exchange.

## #319 Scott Road Station/Scottsdale Mall

## #320 Langley Centre/Scott Road Station

## #321 White Rock Centre/Scott Road Station

These routes will be revised to provide service to Scott Road Station (instead of New Westminster Station). Minor schedule adjustment will be made to the #319 during rush hours.

The #320 will be extended past Guildford during the evenings to provide 30 minute service to Fleetwood.

The #321 will be revised to provide service to Newton Exchange and will be rerouted to travel along 68th Avenue, 138th Street, and 72nd Avenue, to and from the Newton Exchange. The #324 route will replace service along King George Highway between 68th and 72nd Avenue. Service will be improved to every 30 minutes on Sunday and holiday afternoons between Newton Exchange and White Rock Centre. Some early Sunday and late night trips will be provided to New Westminster Station when SkyTrain is not operating.

## #322 Newton Exchange/Panorama Ridge/Scottsdale Mall

This new route will provide a link between Newton Exchange and Scottsdale Mall via West Newton and Panorama Ridge. Service will be provided every 60 minutes to West Newton and

## #325 Newton Exchange/Whalley Exchange/Scott Road Station

The route will be revised to provide express rush hour service between Whalley Exchange and Scott Road Station. Buses will now terminate at Newton Exchange. Service to West Newton and Panorama Ridge will be provided by the new #322 route.

## #326 Guildford/Whalley Exchange

## #328 Grosvenor/Whalley Exchange

Some departure times will be adjusted to improve connections at Whalley Exchange.

## #329 Whalley Exchange/Scott & 96th Avenue

This new route will replace the #312 route to provide local service between Whalley Exchange and Scott & 96th Avenue, via King George Highway, 96th Avenue, 124th Street, 92nd Avenue, Scott Road to 96th Avenue. Service will operate every 30 minutes during rush hours and during the daytime, and every 60 minutes during the evening.

## #330 Fleetwood/Guildford/Scott Road Station

The route will be revised to operate between Fleetwood (152nd St. & Fraser Highway) and Scott Road Station, via Guildford during rush hours. This extension will provide improved service to the Fleetwood town centre and the rapidly developing areas along 152nd Street. Service will be improved to every 10 minutes during rush hours and to every 30 minutes during the evenings.

## #332 Guildford/Whalley Exchange

Some departure times will be adjusted to improve connections at Whalley Exchange.

## #333 Guildford/Vancouver

Service on this route will continue to be provided. Three trips will operate during morning and afternoon rush hours.

## #335 Guildford/Scottsdale Mall

The route will be revised to provide service to Scott Road Station via King George Highway and will operate along 124th Street, improving service to the Bridgeview Community Hall. Service will be discontinued on 128th Street and 110th Avenue between King George Highway and Scott Road. New rush hour service will be added between Guildford and Scott Road Station operating every 60 minutes.

Service will be improved to every 15 minutes during rush hours and every 30 minutes during the daytime Monday through Saturday. Service will be improved to every 30 minutes evenings, Sundays and holidays between Newton Exchange and Scottsdale Mall with every second trip continuing to 22nd Street Station.

## #343 Sullivan Heights/Newton Exchange

## #344 Guildford/Newton Exchange

Departure times will be adjusted to improve connections at Newton.

## #345 White Rock Centre/Guildford

Service will be improved to every two hours during the day Monday to Saturday, between White Rock and Guildford.

## #353 Ocean Park/22nd Street Station

A new Sunday, holiday and evening service will be provided in combination with the #354 route.

## #354 White Rock South/White Rock Centre

Service on Sundays, holidays and during the evenings will be combined with the #353 route. Departure times will be changed slightly.

## #356 Cranley/White Rock Centre

Departure times will be changed slightly.

## #390 Scott & 96th Ave/22nd Street Station

This route will be discontinued and replaced by the #312 route operating every 15 minutes between Scottsdale Mall and Scott Road Station during rush hours.

## #391 Scott Road Station/Scottsdale Mall

The route will be revised to provide rush hour service between Scottsdale Mall and Scott Road Station along 116th Street.

## #395 Cloverdale/Scott Road Station

The route will be revised to provide rush hour service between Cloverdale and Scott Road Station via the Fraser Highway and King George Highway. This will provide improved service to SkyTrain from Cloverdale and Fleetwood and will improve service along the Fraser Highway between 152nd Street and King George Highway. The #395 will operate as an express route from Fraser Highway and King George Highway directly to Scott Road Station.

## #501 Langley South/Scott Road Station

The route will be revised to provide service to Scott Road Station (instead of New Westminster Station). Within Langley, the #501 will be extended from the current terminus at Grade Crescent and 208th Street, to 40th Avenue. All trips will operate via the Walnut Grove Park & Ride lot. Departure times will be adjusted throughout the week.

## #502 Fernridge/Brookwood/Langley Centre/Scott Road Station

Rush hour trips will be revised to provide service to Scott Road Station (instead of New Westminster Station). Departure times will be adjusted throughout the week to improve connections at Langley Centre.

## #506 Murrayville/Langley Centre

Departure times will be adjusted throughout the week to improve connections at Langley Centre. Friday and Saturday evening service will now be operated by the #511 route.

## #507 Fort Langley/Langley Centre

Rush hour service will be improved to every 30 minutes. Departure times will be adjusted throughout the week to improve connections at Walnut Grove and Langley Centre. Service will begin earlier and operate later on weekdays.

## #511 Aldergrove/Langley Centre

Two hour Friday and Saturday evening service will be operated replacing the #506 route. Departure times will be adjusted throughout the day to improve connections at Langley Centre.

## #640 Scottsdale Mall/Tsawwassen Ferry

Hourly service will operate throughout the day all year round.

## Direct Bus to Lougheed Mall and SFU

During rush hours the #145 will provide a 30 minute service between Scott Road Station, Lougheed Mall and Simon Fraser University.

## Late Night/Early Morning Travel

every 2 hours to Panorama Ridge.

### #323 Newton Exc/Whalley Exc/Scott Road Stn.

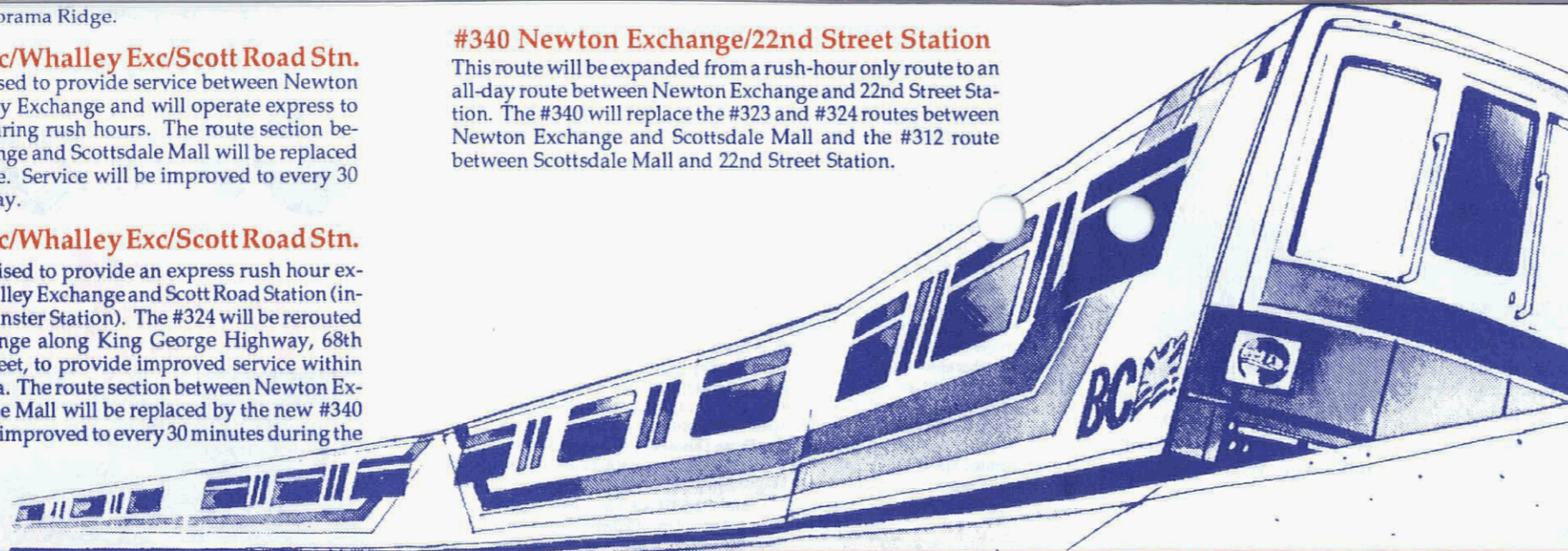
The route will be revised to provide service between Newton Exchange and Whalley Exchange and will operate express to Scott Road Station during rush hours. The route section between Newton Exchange and Scottsdale Mall will be replaced by the new #340 route. Service will be improved to every 30 minutes during the day.

### #324 Newton Exc/Whalley Exc/Scott Road Stn.

The route will be revised to provide an express rush hour extension between Whalley Exchange and Scott Road Station (instead of New Westminster Station). The #324 will be rerouted from Newton Exchange along King George Highway, 68th Avenue to 132nd Street, to provide improved service within the West Newton area. The route section between Newton Exchange and Scottsdale Mall will be replaced by the new #340 route. Service will be improved to every 30 minutes during the day.

### #340 Newton Exchange/22nd Street Station

This route will be expanded from a rush-hour only route to an all-day route between Newton Exchange and 22nd Street Station. The #340 will replace the #323 and #324 routes between Newton Exchange and Scottsdale Mall and the #312 route between Scottsdale Mall and 22nd Street Station.



## TRACK TO THE FUTURE

*continued from page 2*

### Park & Ride

For commuters who find it more convenient to take their car part way, a 1300 vehicle Park & Ride facility is located at the Scott Road SkyTrain Station (enter via Scott Road, King George Highway or 128th Street). Park free all day, seven days a week and transfer directly to SkyTrain and buses. For details on other Park & Ride facilities in Delta and Langley refer to the Park & Ride brochure.

### Fares

The Vancouver Regional Transit System is divided into three fare zones and the fares are the same whether you travel by bus, SkyTrain or SeaBus. Monday to Friday, rush hour fares are in effect when you travel before 9:30 a.m. and from 3:00 to 6:30 p.m. Surrey, North Delta and Langley are located within the Suburban (or third) Zone. Please refer to the following fare chart.

### Fare Structure - One Way

	1 Zone	2 Zones	3 Zones
Adult			
Rush Hours	\$1.25	\$1.75	\$2.50
Off-Peak	\$1.25	\$1.25	\$1.25
Concession			
Rush Hours	\$.65	\$.90	\$1.25
Off-Peak	\$.65	\$.65	\$.65

When you board a bus, cash fares must be paid in exact change (no bills please). Single fare tickets may be purchased from ticket machines located at SkyTrain stations and SeaBus terminals.

Note: Concession fares apply to senior citizens 65+ years, students with valid GoCards and children ages 5-13.

Post-secondary students may travel one, two or three-zones for a one-zone adult fare with a Fast Trax Transit Strip affixed to their student I.D. and a one-zone FareCard. (Details are available at participating campuses.)

### Buy Your Tickets in Advance

Convenient monthly FareCards, DayPasses and FareSaver transit tickets are available at over 300 FareDealer outlets throughout the Lower Mainland. Look for the FareDealer symbol at 7-Elevens, Ticketmaster outlets, CIBC branches (FareCards only), Safeways or other convenience outlets in your area.

### Schedule of First and Last trains

Monday to Friday	First Train	Last Train
Leave Scott Road	5:15 a.m.	12:45 a.m.
Leave Waterfront	5:50 a.m.	1:15 a.m.
Saturday		
Leave Scott Road	6:15 a.m.	12:45 a.m.
Leave Waterfront	6:50 a.m.	1:15 a.m.
Sunday/Holidays		
Leave Scott Road	8:15 a.m.	11:45 p.m.
Leave Waterfront	8:50 a.m.	12:15 a.m.

Limited bus service will be provided to and from New Westminster on the #319, 320 and 321 routes late night and early Sunday mornings when SkyTrain is closed.

## OTHER SERVICE CHANGES

### 3 Main/Robson

Morning rush hour service will be improved to alleviate overcrowding, and departure times will be adjusted.

### 9 Boundary/UBC

Three eastbound morning rush hour trips will be added to alleviate overcrowding between Broadway Station and Renfrew Loop.

### 4 Powell/UBC

### 7 Nanaimo Station/Dunbar

### 16 29th Ave Station/Downtown

Departure times throughout the day will be adjusted.

### 25 Brentwood/UBC

One additional trip will leave UBC at 5:45 p.m.

### 100 Port Coquitlam Ctr/New Westminster Stn/ Airport

Saturday, Sunday and holiday departure times will be adjusted.

### 120 New Westminster Stn/Vancouver

Two trips will be added on Sunday and holiday mornings; leaving New Westminster Station at 6:54 a.m. and Burrard Station at 8:00 a.m.

### 135 SFU/Kootenay Loop

Two additional trips will leave Duthie and Curtis for Kootenay Loop at 7:35 and 8:05 a.m. on Sundays and holidays. Evening departure times on Sundays and holidays will be adjusted.

### 144 SFU/Metrotown Station

### 145 Lougheed Mall/SFU

Evening, Sunday and holiday departure times will be adjusted.

### 147 Coquitlam Ctr/New Westminster Stn.

### 148 Ioco/New Westminster Stn

### 156 Coquitlam Rec Centre/Lougheed Mall

Weekday afternoon departure times at New Westminster Station and Lougheed Mall will be adjusted.

### 151 Port Coquitlam Ctr/Vancouver

### 152 Port Coquitlam Ctr/Vancouver

Sunday and holiday departure times will be adjusted.