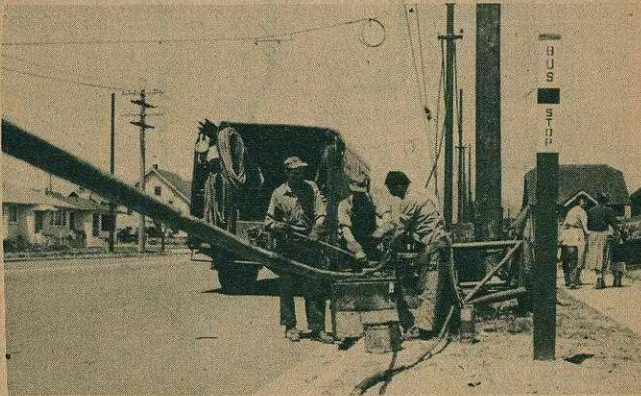


The Change-over in Pictures



AS JULY 16 APPROACHED, final steps were being taken in the \$600,000 conversion. Here, trolley coach overhead wires are drawn into place on cloverleaf at south end of Granville Bridge. Hemlock Street approach crosses picture behind trucks, while main span of Bridge is seen in background.



ON NANAIMO STREET, linemen were installing power lines to feed the new trolley coach overhead wires. Electric coaches will replace motor buses on Nanaimo and the southern terminus will be extended to Kingsway. Altogether, BCE will spend \$1,000,000 this year on transit improvements.



Published by the British Columbia Electric Railway Company, Limited

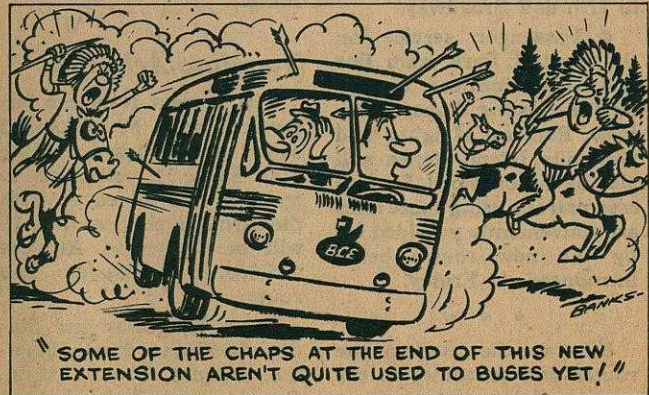
Vol. 39 Vancouver, Tuesday, July 13, 1954 No. 7

More rubber, less rails

An important step forward in the big job of converting Vancouver's transit system from rails to rubber takes place next Friday, July 16th.

On that day the city's second-to-last street car line, No. 1 Grandview, retires for good in favor of motor buses. These in turn will be replaced next fall, after road work has been completed and overhead wire strung, by modern trolley coaches.

There are other important changes and improvements as well on Friday. These are detailed in this issue of *The Buzzer* and we suggest you keep your copy as a handy reference, until you're familiar with the new setup.



Here are the highlights:

- 14 more trolley coaches go into service.
- 12½ miles of new trolley coach route added.
- 4.3 miles of street car track to be ripped up and replaced by smooth blacktop.
- With the Granville Bridge cloverleaves finished, convenient transfer arrangements at the south end of the span will replace the temporary transfer arrangements now in effect.

● Trolley coaches will start operating on the new Nanaimo-Arbutus line, over a new and extended route.

● Renfrew-Joyce bus service will replace the Renfrew-Rupert line.

● Earles bus service, with through service to Hastings and Kootenay, will be introduced.

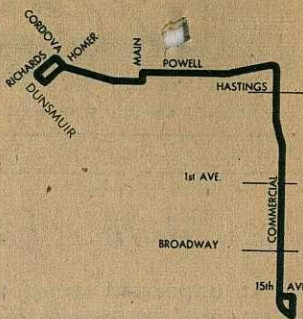
● Broadway Extension bus route will be extended to 17th and Broadway.

● Passenger service on the Central Park tram line will be discontinued. Service on the existing Rupert-Renfrew, Renfrew Heights, and Granville Island routes will also be discontinued. In each case patrons using these lines are conveniently provided for by the new routes being introduced on Friday.

* * *

Here are the details of the routes and schedules in the coming change-over:

Grandview

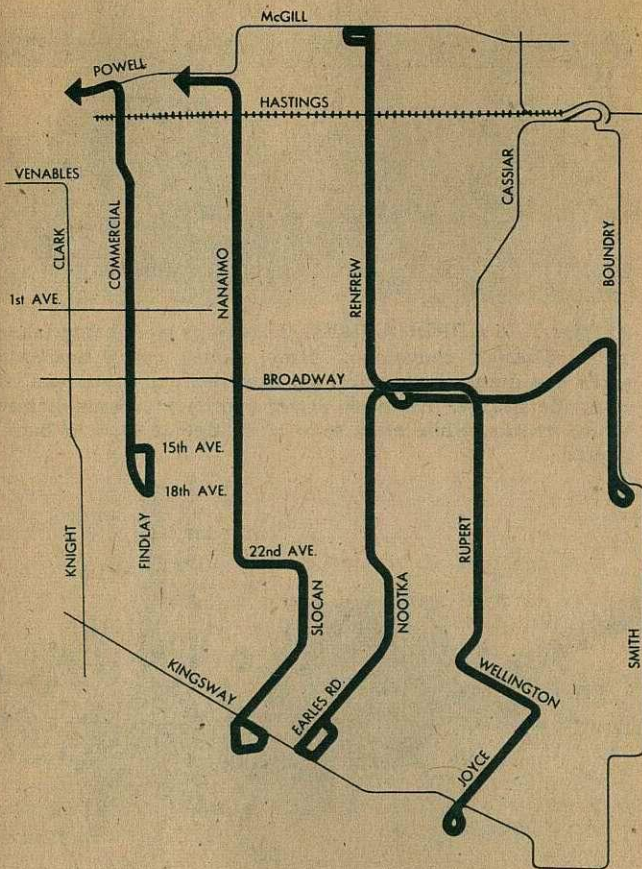


Grandview (No. 1) street cars will be replaced by motor buses preparatory to the introduction of trolley coaches in the fall. Buses will operate, effective Friday morning, from 18th and Commercial via Findlay, 15th, Commercial, Powell, Main, Cordova to Homer, looping via Homer, Dunsmuir, Richards to Cordova, and return over the same route.

Nanaimo-Arbutus

The present Nanaimo bus service will be extended south to Kingsway, (see Map Page 3), converted to trolleys, and joined up with the Arbutus service. No. 18 will be shown to Arbutus and No. 21 to Nanaimo. The route:

From Kingsway and Slocan via Slocan, 22nd, Nanaimo, Dundas, Powell, Main, Cordova and Richards, and



Map showing transit changes in the Eastern section of Vancouver.

thence along the existing Arbutus trolley coach line. Returning, the present Arbutus route will be followed north on Richards, then along Pender, Homer, Cordova and the route listed above to Kingsway, looping via Kingsway, 34th and Slocan.

The schedule:

Lv. Slocan & Kingsway (Weekdays)

B—to Nanaimo & Hastings only
5.34, .52A, 6.04, .24, .40, .50, 7.00, .06, .12, .18, .24, .30, .38, .46, .52, .58, 8.04, .10, .18, .26, .35, .45, 9.00, then every 15 min. until 2.30, .40, .50, 3.00, .15, .30, .38, .45, .58, 4.04, .16, .27, .32, .41, .49, .59, 5.04, .10, .20, .30, .45, 6.00, then every 20 min. until 12.41, 1.10B, 1.39A.

Lv. Richards & Robson for Nanaimo (Weekdays)

A—from Nanaimo & Hastings only
B—to Nanaimo & Broadway only
5.35A, .37, 6.09, .12A, .28, .43, .58, 7.13, .26, .39, .47, .54, 8.02, .13, .30, .44, 9.00, .16, .30, then every 15 min. until 2.00, .16, .31, .41, .51, 3.01, .11, .21, .31, .40, .46, .54, 4.01, .09, .16, .23, .28, .33, .38, .43, .48, .53, .58, 5.02, .07, .11, .17, .23, .29, .35, .43, .51, 6.00, .10, .20, .30, then every 20 min until 12.10, .29, .44, .53A, 1.30AB, .57AB.

Lv. Slocan & Kingsway (Saturday)

A—to Nanaimo & Hastings only
5.40, .52A, 6.00, .20, .40, 7.00, .15, .30, .45, then every 12 min. until 9.21, .32, .43, .54, 10.06, then every 12 min. until 12.42, .53, then every 12 min. until 3.29, .39, .49, then every 8 min. until 5.33, .40, then every 20 min. until 12.41, 1.10B, 1.39A.

Lv. Richards & Robson for Nanaimo (Saturday)

A—from Hastings & Nanaimo only
B—to Broadway & Nanaimo only
5.35A, .37, 6.09, .12AB, .28, .43, .58, 7.19, .40, .55, 8.10, .22, .34, .44, .54, 9.06, then every 12 min. until 11.54, 12.07, then every 12 min. until 3.07, then every 10 min. until 3.57, then every 8 min. until 5.41, .51, 6.01, .16, .31, .50, then every 20 min. until 12.10, .29, .44, .53A, 1.30AB, .57AB.

Lv. Slocan & Kingsway (Sunday)
7.00, .30, 8.00, .30, 9.00, .30, 10.00, then every 20 min. until 11.21, .51, 12.21, .50.

A—from Hastings & Nanaimo only

B—to Broadway & Nanaimo only
Lv. Richards & Robson for Slocan (Sunday)

6.48, 7.18, .48, 8.18, .48, 9.18, .48, 10.08, .29, then every 20 min. until 11.49, 12.19, .53AB.

Renfrew-Joyce

Renfrew-Joyce bus service (see Map Page 3) will operate from the loop at Joyce and Kingsway via Joyce, Wellington, Rupert, Broadway and Renfrew to Eton, looping via Eton, Kaslo, McGill, and Renfrew, returning over the same route.

The schedule:

Lv. Joyce Rd. Loop (Weekdays)
5.22, .55, 6.13, .23, .33, .41, .48, .55, 7.02, .07, .12, .17, .22, .28, .34, .40, .46, .52, .58, 8.03, .08, .13, .19, .25, .31, .37, .48, 9.00, then every 12 min. until 3.24, .36, .43, .50, .57, 4.04, .12, .19, .26, .32, .38, .44, .50, .56, 5.02, .08, .14, .21, .24†, .32, .39, .48, .51†, .56, .59†, 6.06, .16, .26, .29†, .36, .46, .56, 7.06, .16, .26, .36, .46, .56, 8.06, .17, then every 15 min. until 12.47, 1.02, .19, .35†, .50†, 2.07†, .15†.

†—To Broadway & Renfrew only
Lv. Joyce Road Loop (Saturday)

5.22, .55, 6.13, .25, .37, .49, 7.01, .13, .25, .35, .44, .53, 8.02, .11, .30, .38, .47, .55, then alternating 7-8 min. until 3.47, then every 6 min. until 5.59, 6.06, .10†, .16, .26, .31†, .36, then every 10 min. until 8.06, .17, then every 15 min. until 1.02, .19, .35†, .50†, 2.07†, .15†.

†—To Broadway & Renfrew only
Lv. Joyce Road Loop (Sunday)

6.22, 7.02, .22, .42, 8.02, .22, .42, 9.02, .17, then every 15 min. until 11.47, 12.02†, .17, .32, .47†, 1.07†, .37†.

†—To Broadway & Renfrew only
Lv. Eton & Renfrew (Weekdays)

B—from Broadway & Renfrew only
5.08B, .40B, .50, 6.08B, .18B, .20, .34B, .37, .41B, .48, .58, 7.07, .15, .22, .28, .34, .39, .44, .49, .55, 8.01, .07, .14, .21, .27†, .33, .39†, .45, .51†, .57, 9.03†, .09, .20, then every 12 min. until 3.20, .28, .35, .43, .50, .58, 4.03, .09, .15, .21, .27, .33, .38, .44, .50, .56, 5.02, .08, .14,

.20, .26, .32, .38, .45, .53, 6.01, .08, .17, .24, .33, .43, .53, 7.03, .13, .23, .35, .50, 8.05, then every 15 min. until 1.35, .52.

B—from Broadway & Renfrew only

Lv. Eton & Renfrew (Saturday)
5.08B, .40B, .50, 6.08B, .18B, .20, .37, .50, 7.02, .14, .26, .39, .50, 8.02, .14, .24, .33, .42, .51, 9.00, .09, .18, .26, then alternating 7-8 min. until 4.16, then every 6 min. until 6.22, .28†, .33, .43, .53, 7.03, .13, .23, .35, .45, .55†, 8.05, .15, .22†, .35, then every 15 min. until 1.35, .52.

†—to Renfrew & Broadway only
Lv. Eton & Renfrew (Sundays)

B—from Broadway & Renfrew only
6.10B, .43, 7.23, .43, 8.04, .24, .48, 9.12, .32, .50, then every 15 min. until 12.05, .25, .45, 1.15.

Earles

Earles bus route — with through service to Hastings and Kootenay—will operate from Kingsway via Earles, Nootka, Boyd Diversion, Renfrew and Broadway to the Broadway-Renfrew loop. (See Map Page 3). Every second trip will continue via the Cassiar route (see Map Page 3), Broadway, Rupert, Cassiar Diversion, Cassiar, Hastings to Kootenay loop, and return to Kingsway. The alternate trips will return from Broadway and Renfrew to Kingsway.

The Earles schedule:

Lv. Earles & Kingsway (Weekdays & Saturday)
6.10, .30, .40, .50, 7.00, .10, .20, .30, .40, .50, 8.00, .10, .20, .30, .40, .50, 9.00, then every 15 min. until 3.00, then every 10 min. until 6.30, then every 15 min. until 1.00, .33.

Lv. Earles & Kingsway (Sunday)
7.00, .30, then every 15 min. until 12.00, .40.

Lv. Broadway & Renfrew to Earles & Kingsway (Weekdays & Saturday)
6.15, .25, .35, .45, .55, 7.05, .15, .25, .35, .45, .55, 8.05, .15, .25, .35, .45, then every 15 min. until 3.15, then every 10 min. until 6.15 then every 15 min. until 12.45, 1.20.
Lv. Broadway & Renfrew to

Earles & Kingsway (Sunday)
7.15, .30, then every 15 min. until 11.45, 12.16.

The Cassiar schedule:

Lv. Kootenay Loop (Weekdays & Saturday)
6.10, .30, .50, 7.10, .30, .50, 8.10, .30, .50, 9.15, then every 30 min. until 3.15, .50, 4.10, .30, .50, 5.10, .30, .50, 6.15, then every 30 min. until 12.45, 1.38.

Lv. Kootenay Loop (Sunday)
7.15, .45, 8.15, then every 30 min. until 11.45, 12.18.

Lv. Broadway & Renfrew for Kootenay Loop (Weekdays & Saturday)

5.55, 6.15, .35, .55, 7.15, .35, .55, 8.15, .35, 9.00, then every 30 min. until 3.00, .35, then every 20 min. until 5.35, 6.00, then every 30 min. until 12.30.

Leave Broadway & Renfrew for Kootenay Loop (Sunday)

7.00, .30, 8.00, then every 30 min. until 12.00.

Broadway Extension

The present Broadway Extension bus line will be lengthened, operating from the Renfrew loop on Broadway via Broadway, Lougheed Highway and Boundary Rd. to 17th Ave., looping at 17th and Boundary and returning over the same route. (See Map Page 3).

The schedule:

Lv. 17th & Boundary to Renfrew Loop (Weekdays & Saturdays)
6.04, .24, .44, 7.04, .24, .44, 8.04, .24, .44, 9.04, .14, then every 30 min. until 3.44, then every 20 min. until 6.44, .54, 7.14, then every 30 min. until 1.14.

Lv. 17th & Boundary to Renfrew Loop (Sunday)
7.14, .44, 8.14, then every 30 min. until 12.44.

Lv. Renfrew Loop to 17th & Boundary (Weekdays & Saturday)
5.52, 6.02, .22, .42, 7.02, .22, .42, 8.02, .22, .42, 9.02, then every 30 min. until 3.02, then every 20 min. until 7.02, then every 30 min. until 1.02.

Lv. Renfrew Loop to 17th & Boundary (Sunday)
7.02, .32, 8.02, then every 30 min. until 12.32.

Changes on Granville Bridge

Now that the cloverleafs and main ramps on the new Granville Bridge are finished, it is possible to install convenient transfer points once again at the south end of the span. (See Maps, Pages 6 and 7). The new routes will be as follows:

GRANVILLE - KINGSWAY-VICTORIA.

Northbound and southbound via Granville.

DUNBAR-OAK: North-

bound and southbound via Broadway and Granville.

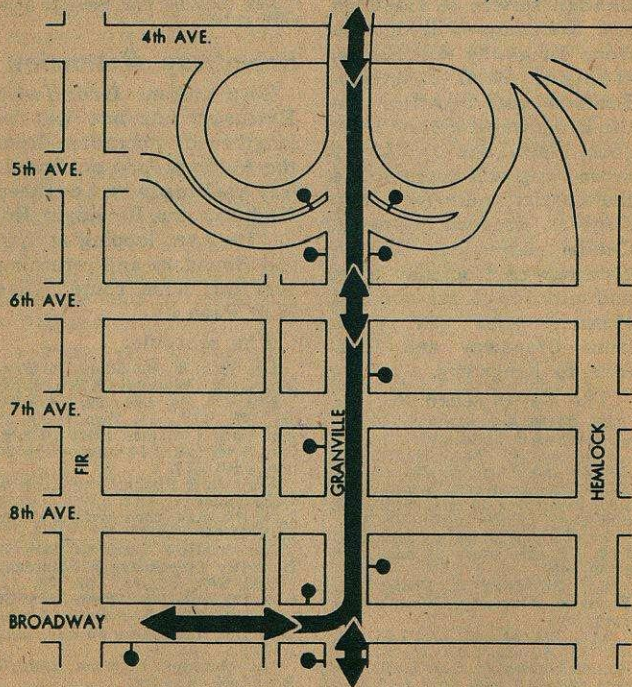
NANAIMO-ARBUTUS:

Northbound via Broadway, Granville, Granville Bridge, Seymour, Davie and Richards.

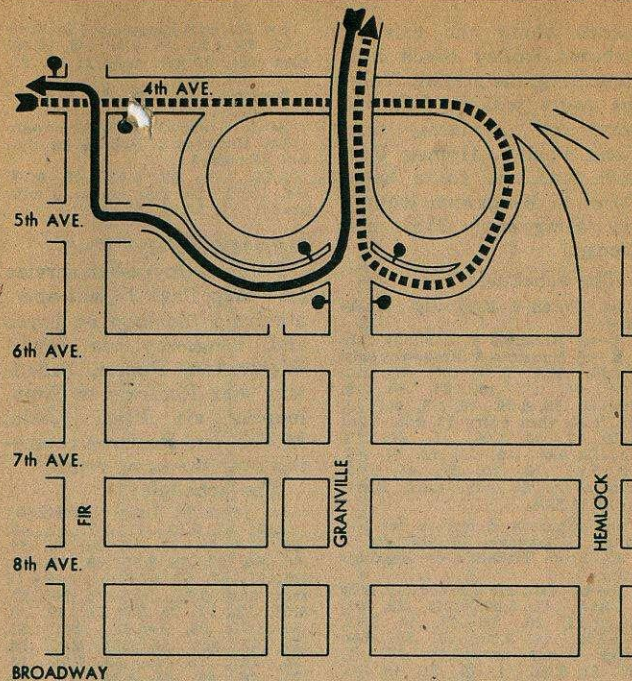
Southbound via Richards, Pacific, Cloverleaf to Bridge, Granville to Broadway.

4th AVE. - 10th AVE.: Northbound via 4th avenue, Cloverleaf, Granville Bridge, Seymour St.

Southbound via Howe, Granville Bridge, Cloverleaf to 5th avenue, Fir, 4th ave.



Transit stops are shown by this symbol: ⚓



Transit stops are shown by this symbol: ⚓

The temporary Granville Island bus service, which was set up to operate between Broadway and the Island during the time when the Cloverleaf construction created inconvenient stop arrangements at the south end of the bridge, will be discontinued with the last trip on Thursday, July 15th.

A parting word

These are, as you see, quite far-reaching changes and getting used to them will take time. As mentioned

earlier, we suggest you keep this issue of *The Buzzer* as a handy guide.

But also we'll be happy to answer any questions you may have about how to take the best and shortest route under the changed setup.

Ask your operator or call Transit Information, KERRISDALE 7500, day or night.

Then there was the cat who ate the cheese and stood beside the rat hole with bated breath.