



Millennium Line UBC Extension

Public Engagement

Have your say from April 19 to May 14, 2021: translink.ca/ubcextension

We Want To Hear From You!

We want your feedback on a potential SkyTrain extension to UBC.

During this engagement, we're seeking your feedback on:

- Priorities, opportunities, and considerations regarding a potential SkyTrain extension to UBC
- Criteria to help assess potential route and station location options

From April 19 to May 14, learn more and provide your feedback online:
translink.ca/ubcextension

- Review this document
- Complete the online survey
- Register for the online open house:

Saturday, May 1, 2021
10:00–11:00a.m.

You can also email us at:
ubcextension@translink.ca

Overview

In this document, you'll find information on:

1. Background
2. Benefits and Opportunities
3. Our Current Work
4. Public Engagement
5. Next Steps

We're Planning for the Future

While public transit use declined in 2020 and early 2021 due to COVID-19, it remained an essential service.

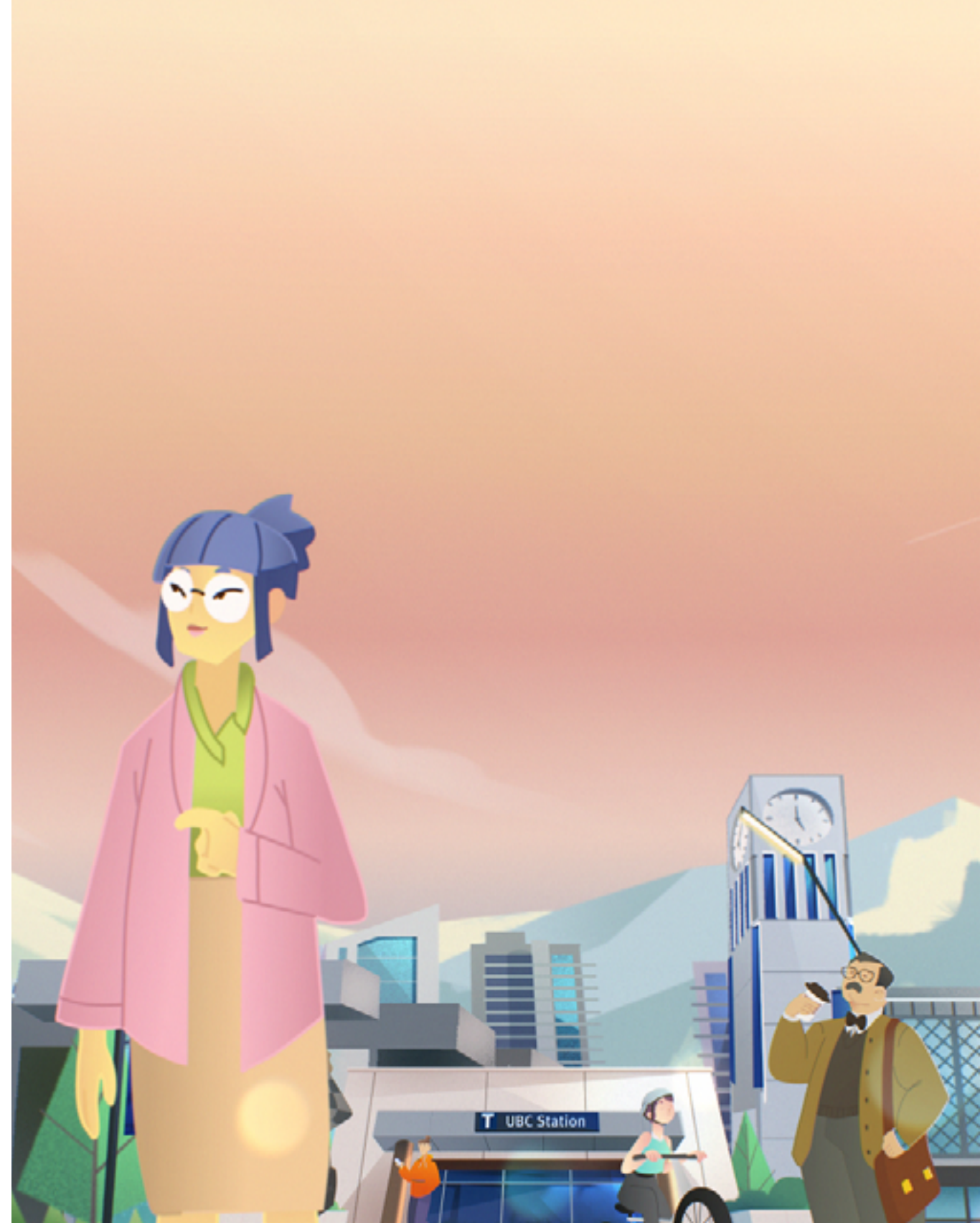
Work and travel habits may change for some in the coming months and years, but we expect transit ridership to return to—and surpass—pre-pandemic levels as the region prepares to welcome **more than 1 million more people and approximately 500,000 new jobs by 2050**. That is why we are looking ahead and planning for the future.

What is the Millennium Line UBC Extension?

A potential SkyTrain extension from Arbutus Street to UBC.

We're currently undertaking technical planning and engaging with stakeholders, the public, and Indigenous Nations to assess:

- Potential route options, including where the SkyTrain could be elevated or underground
- Potential location of future stations



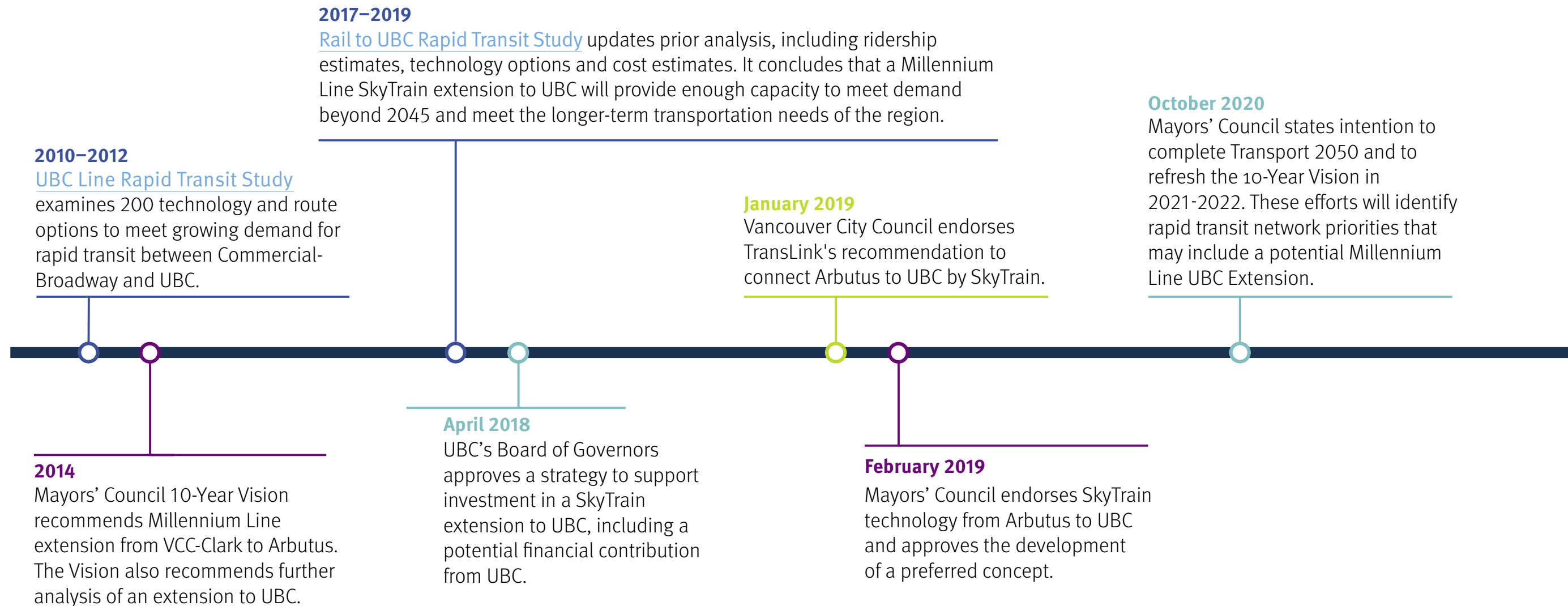
1. Background

Transit Along The Broadway Corridor

- In 2019 (pre-COVID), the 99 B-Line moved **up to 60,000 customers per day** on articulated buses along the Broadway Corridor
- Buses ran every **two to three minutes** at peak times
- This is the **busiest and the most consistently overcrowded bus route** in our region's network



The History of Planning for Rapid Transit to UBC



Broadway Subway Project

The Broadway Subway Project is currently underway.

- Will extend the Millennium Line by 5.7 kilometres from VCC-Clark SkyTrain Station to Broadway and Arbutus Street
- Will have the capacity to move three times as many people as the 99 B-Line

B-Line bus service will continue to operate between Arbutus and UBC after this extension opens in 2025.



Why are we planning for a potential Millennium Line UBC Extension?

When the Broadway Subway Project opens in 2025, the shortened 99 B-Line route, from Arbutus Street to UBC, is expected to be at capacity in the peak hour.

- With expected increases in jobs, housing, and educational opportunities, transit demand will continue to grow along the Broadway Corridor to and from UBC
- SkyTrain is the only form of rapid transit that could meet future ridership demand from Arbutus Street to UBC beyond 2050
- This sustainable travel option would better connect the region to:
 - Higher education, jobs, and housing opportunities
 - Cultural amenities and health and technology precincts along the Broadway Corridor

2. Benefits and Opportunities

Project Benefits



**Improves
reliability
and travel
time**



**Meets
future
demand**



**Offers a
sustainable
transportation
choice**



**Expands
economic
opportunity and
access to jobs**



**Supports
opportunities
for Indigenous
peoples**

Improves Reliability and Travel Time

A SkyTrain extension to UBC would:

- Address issues on the busiest and the most consistently overcrowded bus route on our region's network
- Reduce the travel time between Commercial-Broadway and UBC by half (compared to bus), saving transit customers more than 20 minutes per trip*
- Offer a one-seat ride with no need to transfer at Arbutus

**Comparison includes Broadway Subway Project extension and a potential UBC extension*



Meets Future Demand and Offers a Sustainable Transportation Choice

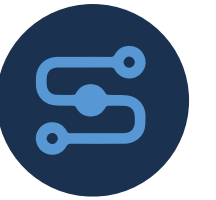
It is expected that by 2050, a Millennium Line UBC Extension could carry 130,000 people per day.

A SkyTrain extension to UBC would:

- Accommodate expected ridership along the Broadway Corridor and allow for future expansion
- Support sustainable transportation options for those who live, work, study and play along the Broadway Corridor and beyond
- Reduce vehicle use by 3,000 car trips during peak times



Connects the Region While Expanding Economic Opportunities and Access to Jobs



UBC is a major destination for people from all over Metro Vancouver and it is one of the largest employment centres in the region.

- In 2019, the UBC campus had a daytime population of 80,000 people, which is expected to increase to 130,000 by 2050
- Students, faculty and staff commute to UBC from across the region
- About half of the passengers on a future UBC extension would come from outside the City of Vancouver

A SkyTrain extension to UBC would:

- Connect over 1 million people within a 60-minute transit trip to UBC
- Increase transit connectivity between job centres to support economic prosperity in Metro Vancouver

Supports Opportunities for Indigenous Peoples



A SkyTrain extension to UBC would:

- Provide improved access to the rapid transit network for Indigenous-owned lands, developments and communities, including the Jericho Lands and areas within the University Endowment Lands
- Support transit-oriented development on Indigenous-owned lands
- Support Indigenous economic development and well-being
- Provide an opportunity to support recognition and integration of Indigenous culture

3. Our Current Work

Our Current Work

We are undertaking technical planning work and engaging with stakeholders, the public, and Indigenous Nations to:

- Confirm the objectives of a potential SkyTrain extension
- Evaluate potential route options and station locations
- Collect information related to geotechnical (soil) and environmental conditions

We are working closely with the Province of BC, City of Vancouver, UBC, Musqueam Nation, Squamish Nation, Tsleil-Waututh Nation, Metro Vancouver and the University Endowment Lands.



4. Public Engagement

We Want Your Feedback On

Project Values

**Criteria to Help Assess Potential Route
and Station Location Options**

Project Values

These values are helping to guide our planning process:

- Improve reliability and travel time
- Provide a safe and secure service
- Meet future ridership demand
- Attract new riders
- Better connect people to jobs, housing, recreation, and education
- Support and integrate with existing and future land use and development
- Expand local and regional economic opportunity
- Minimize impacts to neighbourhoods
- Minimize impacts to the natural environment
- Reduce greenhouse gas emissions (GHGs)
- Improve access to transit for low-income households

What do you think? We want to hear from you! Take the survey at:

translink.ca/ubcextension

Criteria to Assess Potential Route and Station Locations

To measure the potential options, we will look at the following criteria:

Area of Focus	Criteria to Help Assess Potential Route and Station Location Options
Customer Experience	Travel time: Travel times and reliability for transit riders
Transportation	Ridership: How many new riders would use the service Transportation: Effects on walking, cycling, driving, and trucks (goods movement) Access: Access to existing and future jobs, housing, and recreational and educational opportunities
Urban Development	Streetscape/urban realm: Contribution to a high-quality urban environment with active and inviting streets Land use: Alignment with municipal and other local land use planning
Social, Community & Environment	Neighbourhood: Consideration of impacts to established communities Environmental: Effects on the natural environment Climate change: Reduction of greenhouse gases
Economic Development	Opportunities for Indigenous peoples: Supports for Indigenous peoples’ employment opportunities and economic well-being Economic opportunity: Advance local and regional economic well-being by improving the movement of people and goods
Financial	Financial: Cost-effective use of public funds Fares: Fare revenue to finance the operations and maintenance of the extension

What else should we consider? Take the survey at:

translink.ca/ubcextension

How We Will Use Your Feedback

Your feedback will help us confirm the objectives of a potential SkyTrain extension, and evaluate possible route options and station locations.

Further engagement opportunities will be provided if decision-makers direct us to proceed to create a business case for a preferred alternative.



5. Next Steps

Timeline

