

Appendix 3: Environmental Considerations Analyses

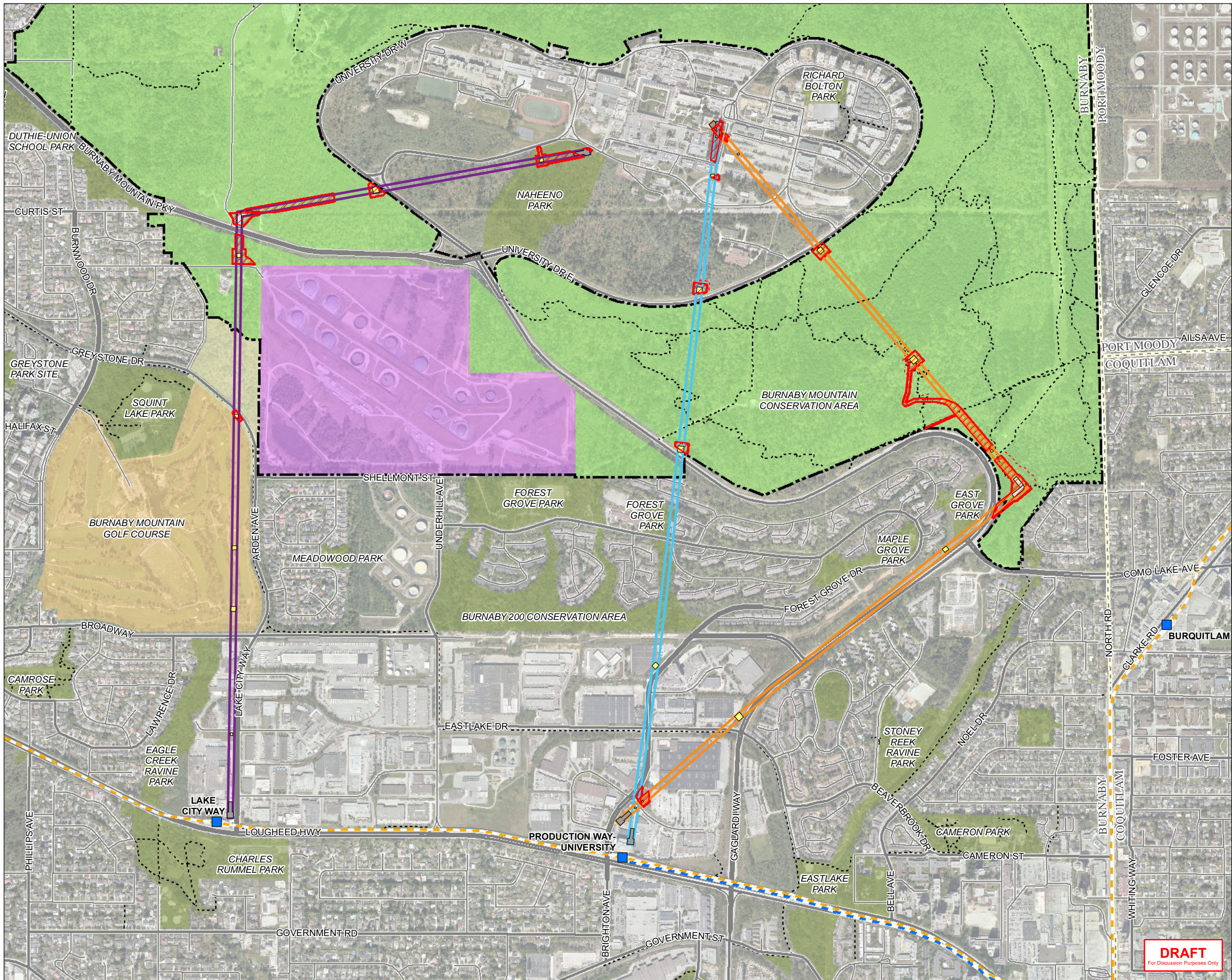
Burnaby Mountain Conservation Area and Parkland and Gondola Aerial and Infrastructure Overlap Map

Land Disturbance Map

Tree Loss Map

Watercourses and Riparian Areas Map

Western Painted Turtle Critical Habitat Map



Burnaby Mountain Gondola Transit Project
Burnaby, British Columbia

Lowest Impact to Burnaby Mountain
Conservation Area and Parkland

Legend

SkyTrain Station

Expo Line

Millenium Line

Major Road

Local Road

Urban Path or Trail

Administrative Boundary

Route Options

Route 1 Right of Way

Route 2 Right of Way

Route 3 Right of Way

Alignment Features

Recreation Trail Reroute

Terminal Station

Tower

Tree Clearing Area

Turning Station

Land Use

Burnaby Mountain Conservation Area Plan Boundary

Burnaby Mountain Conservation Area - Industrial

Burnaby Mountain Conservation Area - Park and Public Use

Burnaby Mountain Golf Course

Open and Undeveloped Area

Park or Protected Area

Notes

1. All mapped features are approximate and should be used for discussion purposes only.

2. This map is not intended to be a "stand-alone" document, but a visual aid of the information contained within the referenced Report. It is intended to be used in conjunction with the scope of services and limitations described therein.

Sources

- Contains information licensed under the Open Government Licences - City of Burnaby & Government of British Columbia

- Alignment: SCJ Alliance Consulting Services, 2020

- Aerial Image: City of Burnaby, 2018

N

1:14,000

0 150 300 450 600 750

Metres

NAD 1983 UTM Zone 10N

Page Size: 11" x 17"

104857-01

Production Date: Oct 16, 2020

Figure 1

Hemmera

An Ausenco Company

TRANS LINK

DRAFT

For Discussion Purposes Only

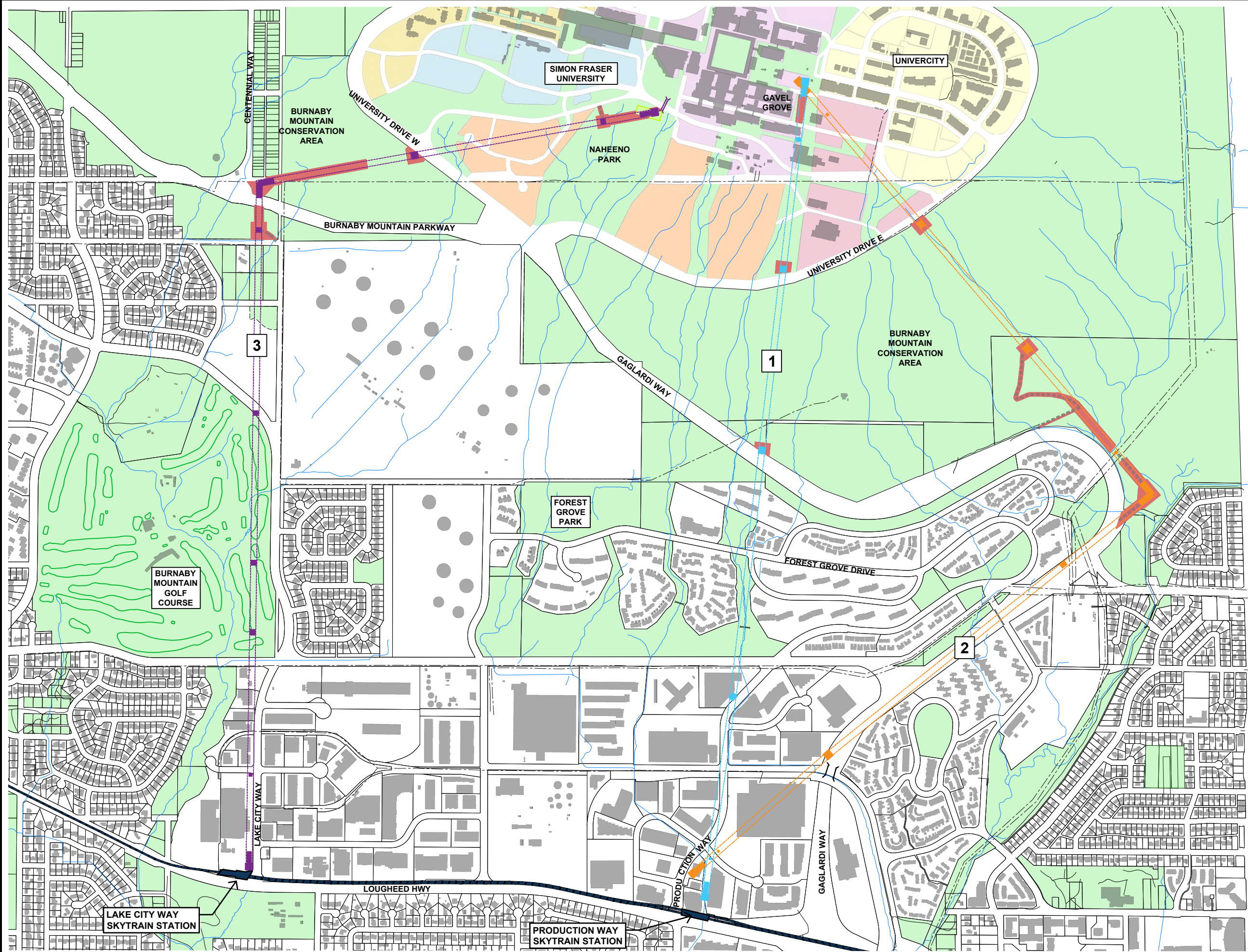
BURNABY MOUNTAIN GONDOLA



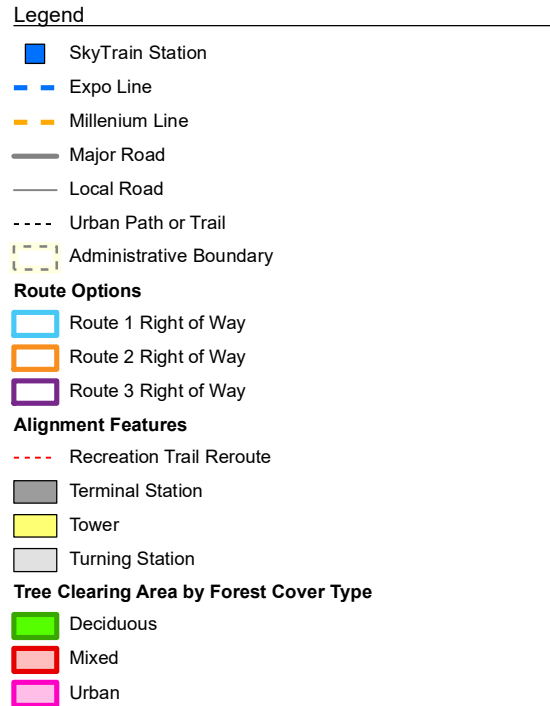
Contour Interval: 5 metre
1:12000 at A3 Print
Date: 11/2020
0m 120 240 360 480 600

LEGEND

- Proposed Burnaby Mountain 3S Gondola
Routes with 20m ROW and Tower
- Route 1, Towers & Terminals
 - Route 2, Towers & Terminals
 - Route 3, Towers & Terminals
 - TransLink SkyTrain Station
 - Burnaby Mountain Conservation Area / City Park
 - Land Disturbance
 - Construction Road



DISTURBANCE MAP



1. All mapped features are approximate and should be used for discussion purposes only.
2. This map is not intended to be a "stand-alone" document, but a visual aid of the information contained within the referenced Report. It is intended to be used in conjunction with the scope of services and limitations described therein.

- Contains information licensed under the Open Government Licences - City of Burnaby & Government of British Columbia
- Alignment: SCJ Alliance Consulting Services, 2020
- Aerial Image: City of Burnaby, 2018



Burnaby Mountain Gondola Transit Project
Burnaby, British Columbia

Lowest Impacts to Watercourses
and Riparian Areas and Setbacks

Legend

SkyTrain Station

Expo Line

Millenium Line

Major Road

Local Road

Urban Path or Trail

Administrative Boundary

Route Options

Route 1 Right of Way

Route 2 Right of Way

Route 3 Right of Way

Alignment Features

Recreation Trail Reroute

Terminal Station

Tower

Tree Clearing Area

Turning Station

Watercourse Classification

Class A (fish-bearing)

Class B (non-fish-bearing, food and nutrients)

Riparian Area (30 m setback)

Impact to Riparian Area by Alignment Option

Route 1:

- Class B: 7.6 m²

Route 2:

- Class A: 7,463.5 m²

- Class B: 5,681.3 m²

Route 3:

- Class B: 6,488.7 m²

Notes

1. All mapped features are approximate and should be used for discussion purposes only.

2. This map is not intended to be a "stand-alone" document, but a visual aid of the information contained within the referenced Report. It is intended to be used in conjunction with the scope of services and limitations described therein.

Sources

- Contains information licensed under the Open Government Licences - City of Burnaby & Government of British Columbia

- Alignment: SCJ Alliance Consulting Services, 2020

- Aerial Image: City of Burnaby, 2018

N

1:14,000

0 150 300 450 600 750

Metres

NAD 1983 UTM Zone 10N

Page Size: 11" x 17"

104857-01

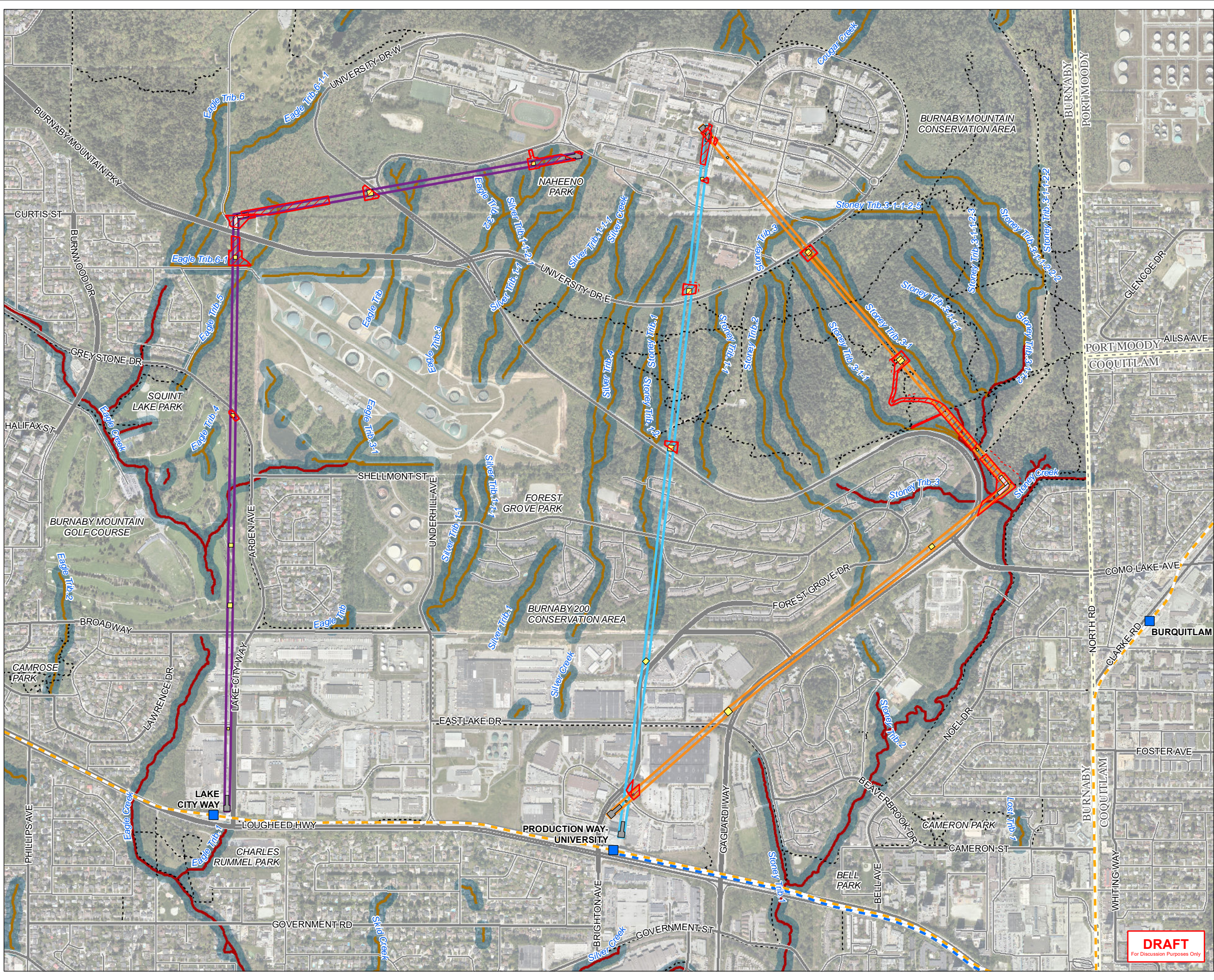
Production Date: Oct 26, 2020

Figure 2

Hemmera

An Ausenco Company

TRANS LINK



Burnaby Mountain Gondola Transit Project
Burnaby, British Columbia

Lowest Impact to Critical Habitat

Legend

Critical Habitat - Western Painted Turtle Pacific Coast Population

SkyTrain Station

Expo Line

Millenium Line

Major Road

Local Road

Urban Path or Trail

Administrative Boundary

Watercourse

Waterbody

Route Options

Route 1 Right of Way

Route 2 Right of Way

Route 3 Right of Way

Alignment Features

Recreation Trail Reroute

Terminal Station

Tower

Tree Clearing Area

Turning Station

Impact to Critical Habitat by Alignment Option

- Option 1: 0.0 m²

- Option 2: 9,344.0 m²

- Option 3: 580.1 m²

Notes

1. All mapped features are approximate and should be used for discussion purposes only.

2. This map is not intended to be a "stand-alone" document, but a visual aid of the information contained within the referenced Report. It is intended to be used in conjunction with the scope of services and limitations described therein.

Sources

- Contains information licensed under the Open Government Licences - City of Burnaby & Government of British Columbia

- Alignment: SCJ Alliance Consulting Services, 2020

- Aerial Image: City of Burnaby, 2018

N

1:14,000

0 150 300 450 600 750

Metres

NAD 1983 UTM Zone 10N

Page Size: 11" x 17"

104857-01

Production Date: Oct 16, 2020

Figure 4

Hemmera

An Ausenco Company

TRANS LINK

Path: S:\GIS\Projects\104857\104857-01_LowestImpact_CriticalHabitat_201016.mxd